



# Gallus 2000 GAS METER



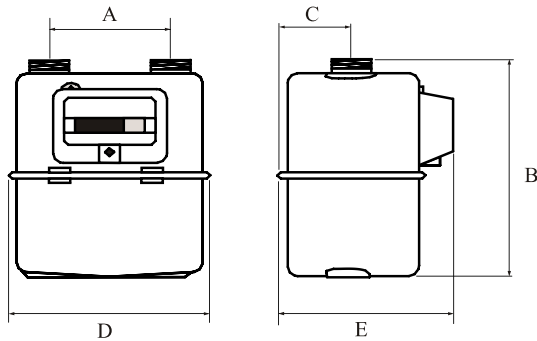
- Compact Size
- Pulse Output
- Fire-resistant Construction

The Gallus 2000 is made to measure accurately the volumes of natural gas used for domestic appliances. The pulse generator can then send the data to required devices for volume totalization.

### Technical Characteristics

Use .....Natural gas and LPG\*  
 Cyclic volume ..... 0.42ft<sup>3</sup>  
 Operating temperature ..... -4° F to +104° C  
 Storage temperature ..... -40° F to +140° C  
 \* please contact us for any other type of gas.

Maximum Operating Pressure .....7.25 PSI  
 Measuring range.....Qmin 1.4 ft<sup>3</sup>/h Qmax 211 ft<sup>3</sup>/h  
 Pulse generator..... Standard 1 ft<sup>3</sup> per pulse  
 Pulse transmitter..... LF-system, 12 Vdc max  
 10 mA max, standard 1 ft<sup>3</sup>/pulse



Meter Case Material	A in	B in	C in	D in	E in	Wt lb	Connection Threads
STEEL	4.3	8.9	2.6	7.4	6.5	3.2	½" NPT

Typical accuracy curve

